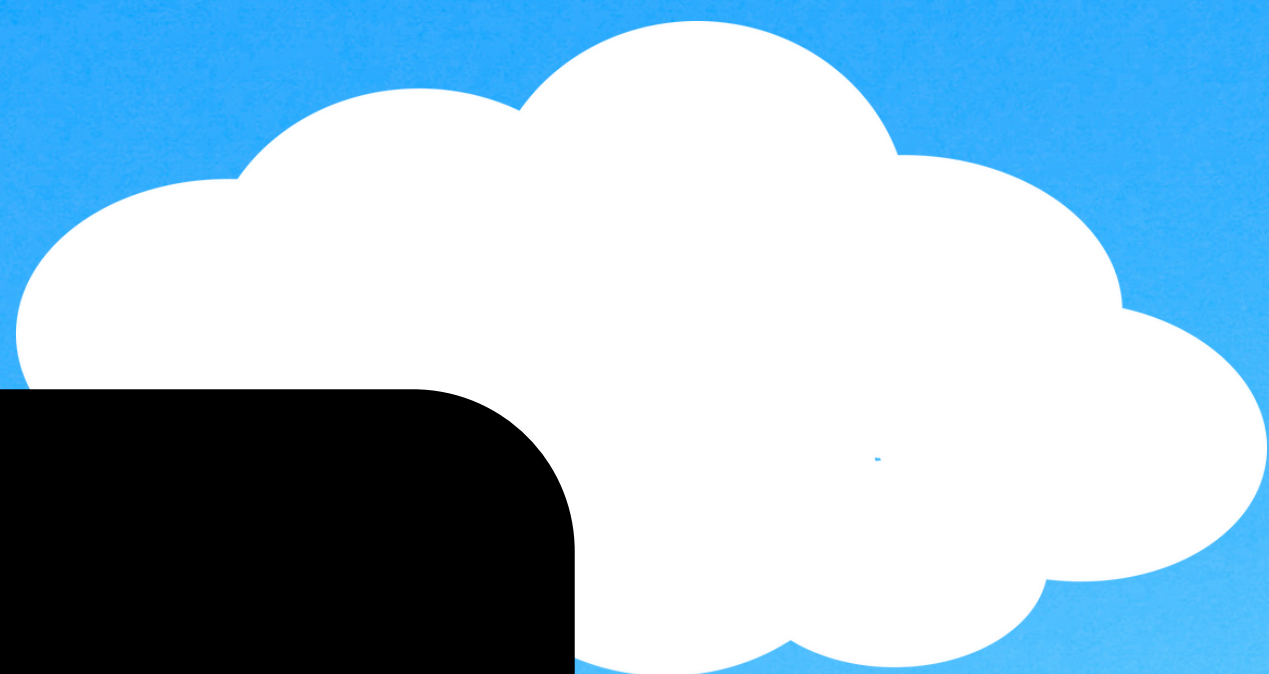
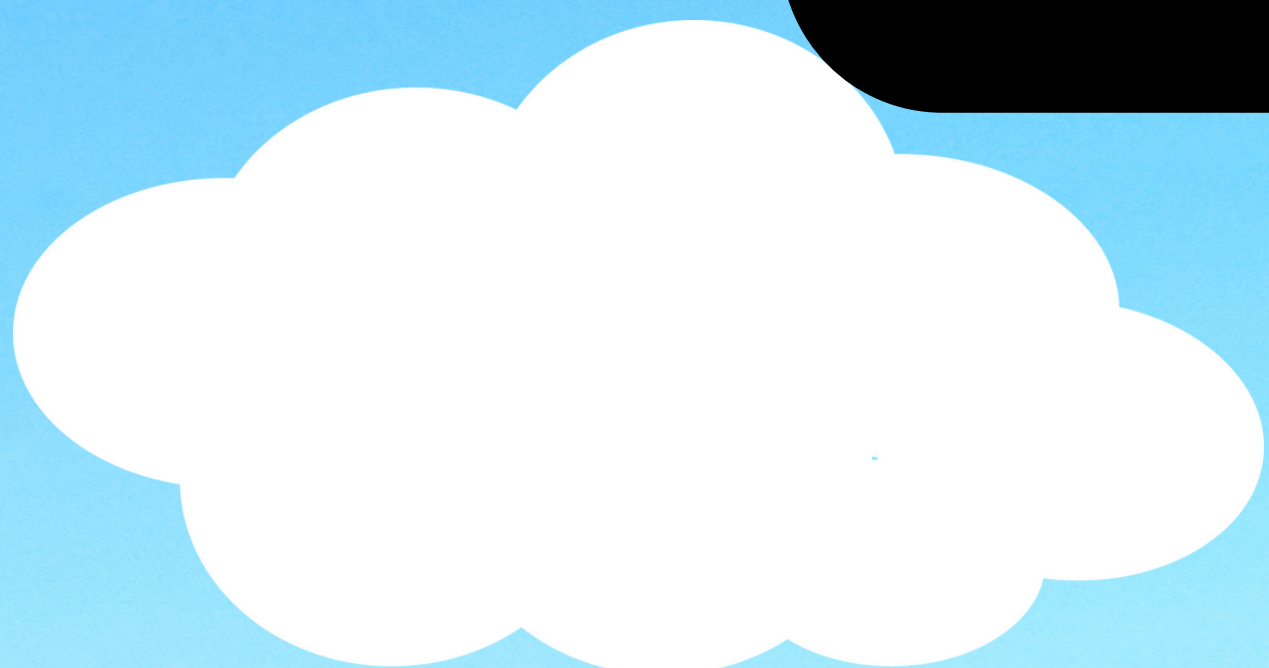


MY WEATHER WATCHER

JOURNAL



WEATHER
22
WX





HELP CHASE FIND THE WEATHER WORDS!

T O R N A D O D R L
R S T O R M C E A H
J R E T L E H S A C
C W D S O T P Y D T
Z A I C A D X O V A
O R E E K B D N I W
A N W S W O N S S U
L I A H A U C E O C
S N H R D H V X R Y
V G Y N U O C E Y U

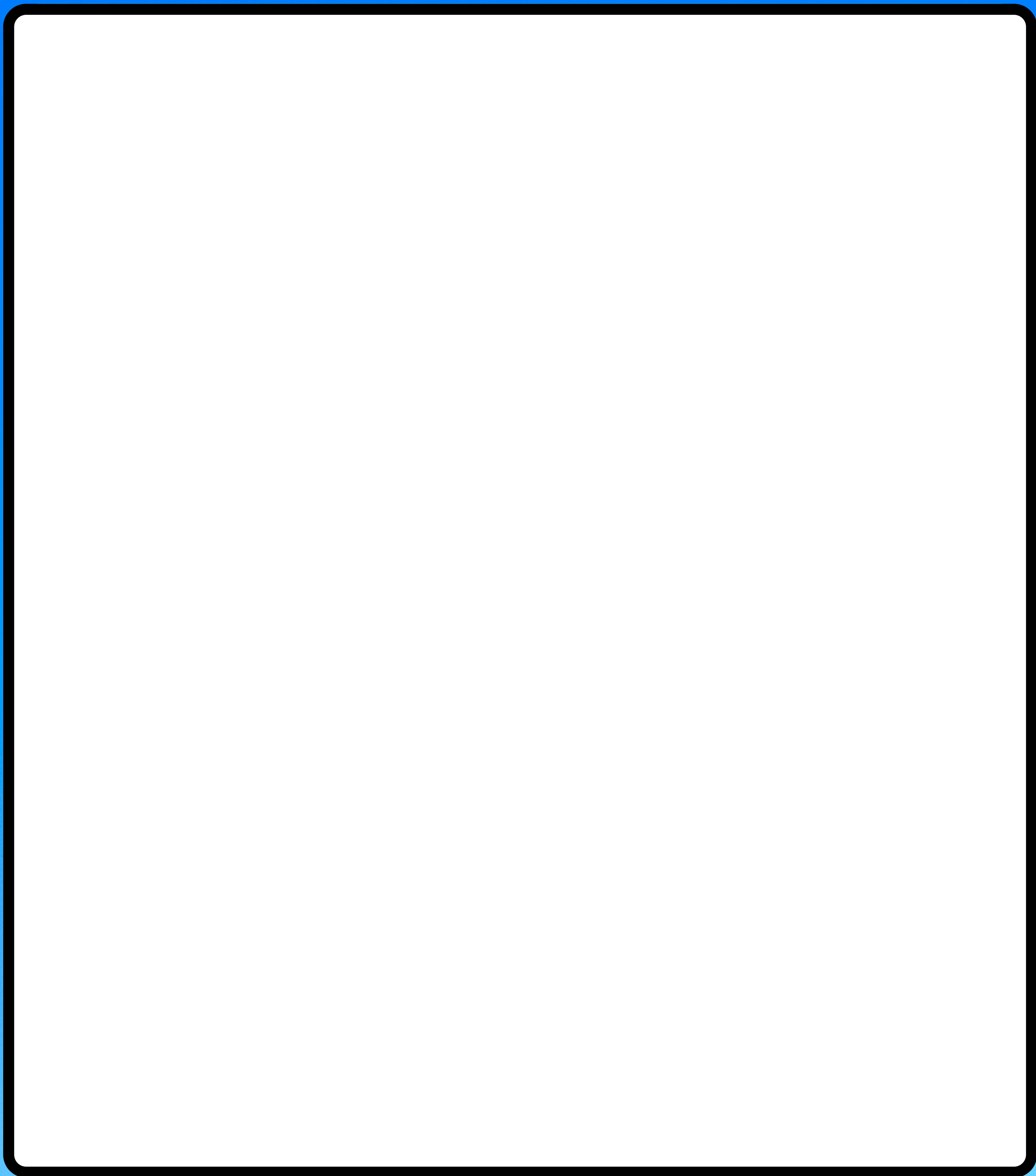
Word Bank

1. snow
5. hail
9. shelter

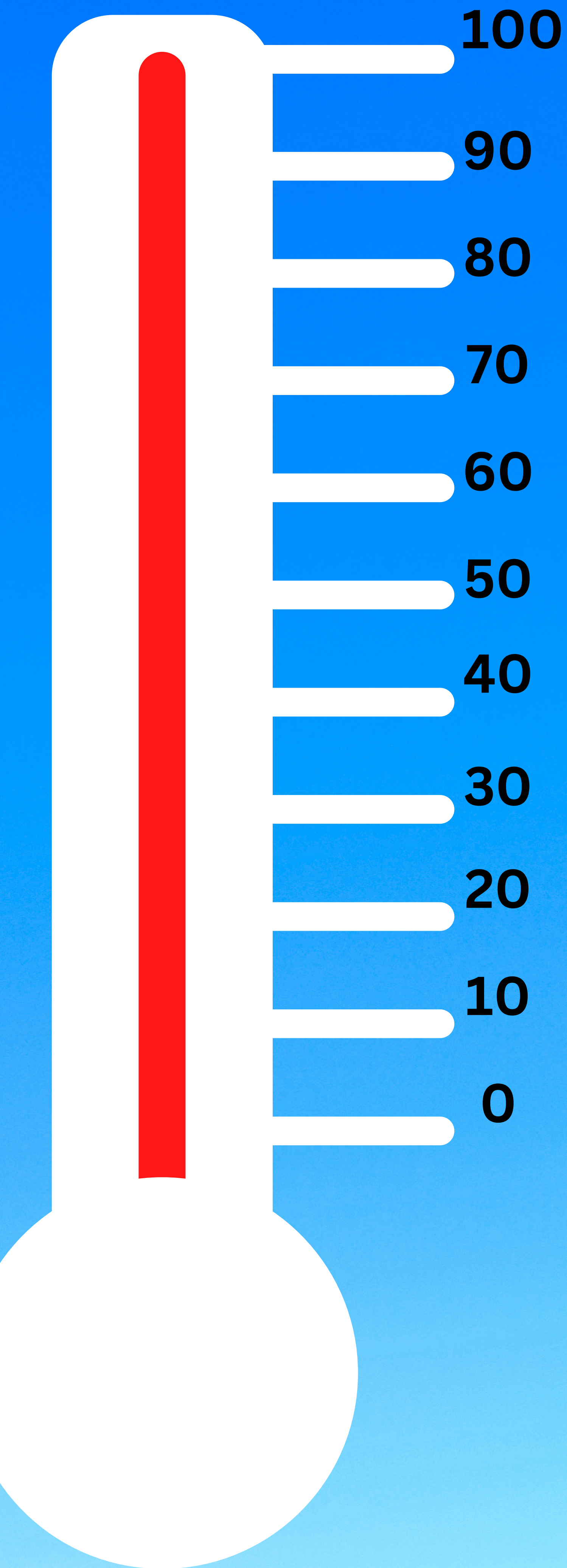
2. wind
6. storm
10. advisory

3. chase
7. tornado
11. warning

4. weather
8. watch



DRAW THE WEATHER OUTSIDE



RECORDED TEMPERATURES

DAY 1:

DAY 2:

DAY 3:

DAY 4:

DAY 5:

**RECORD THE
TEMPERATURES
EACH DAY HERE**

DID IT RAIN?

***MEASURE THE RAIN WITH A RAIN CATCHER/RAIN
GUAGE AND RECORD YOUR FINDINGS HERE***

DAY 1

"

.

DAY 2

"

.

DAY 3

"

.

DAY 4

"

.

DAY 5

"

.

DID IT SNOW?

***MEASURE THE SNOW WITH A MEASURING STICK
TO RECORD YOUR AREAS SNOW FALL AMOUNT***

DAY 1

"

.

DAY 2

"

.

DAY 3

"

.

DAY 4

"

.

DAY 5

"

.

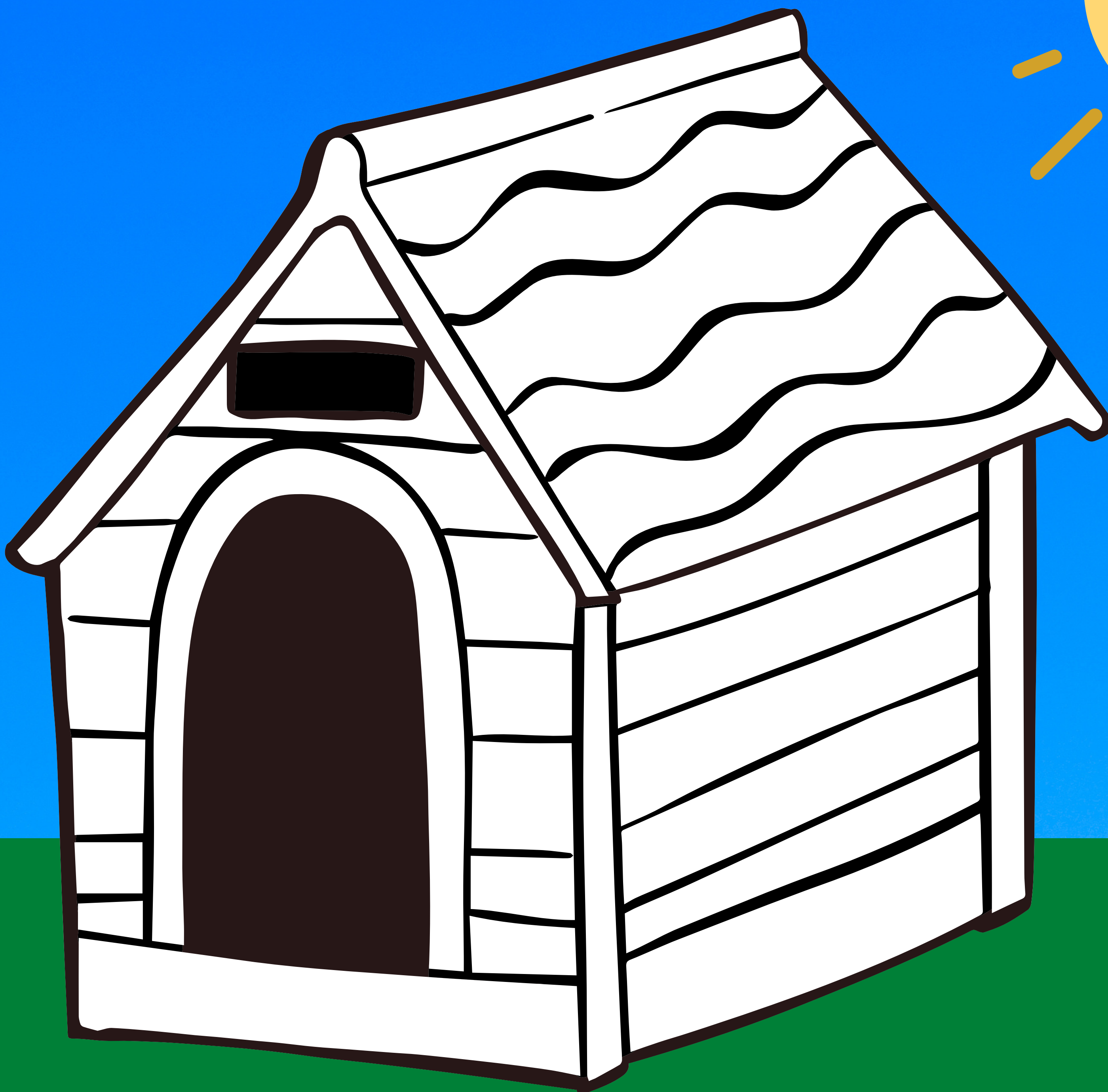
WEATHER TERMS

FORECAST: A FORECAST IS ISSUED IN ADVANCED OF ANY GIVEN DAY, AND IS A GENERAL IDEA OF WHAT TO EXPECT

WATCH: A WATCH IS ISSUED WHEN CONDITIONS ARE GROWING SUPPORTIVE FOR THE DEVELOPMENT OF SEVERE WEATHER, AND STORMS COULD DEVELOP SHORTLY

ADVISORY: ADVISORIES ARE ISSUED FOR STRONG STORMS THAT AREN'T QUITE AT SEVERE LIMITS

WARNING: WARNINGS ARE ISSUED WHEN A STORM IS CAPABLE OF SEVERE WEATHER, OR SEVERE WEATHER IS OCCURRING AND PEOPLE NEED TO SEEK APPROPRIATE SHELTER



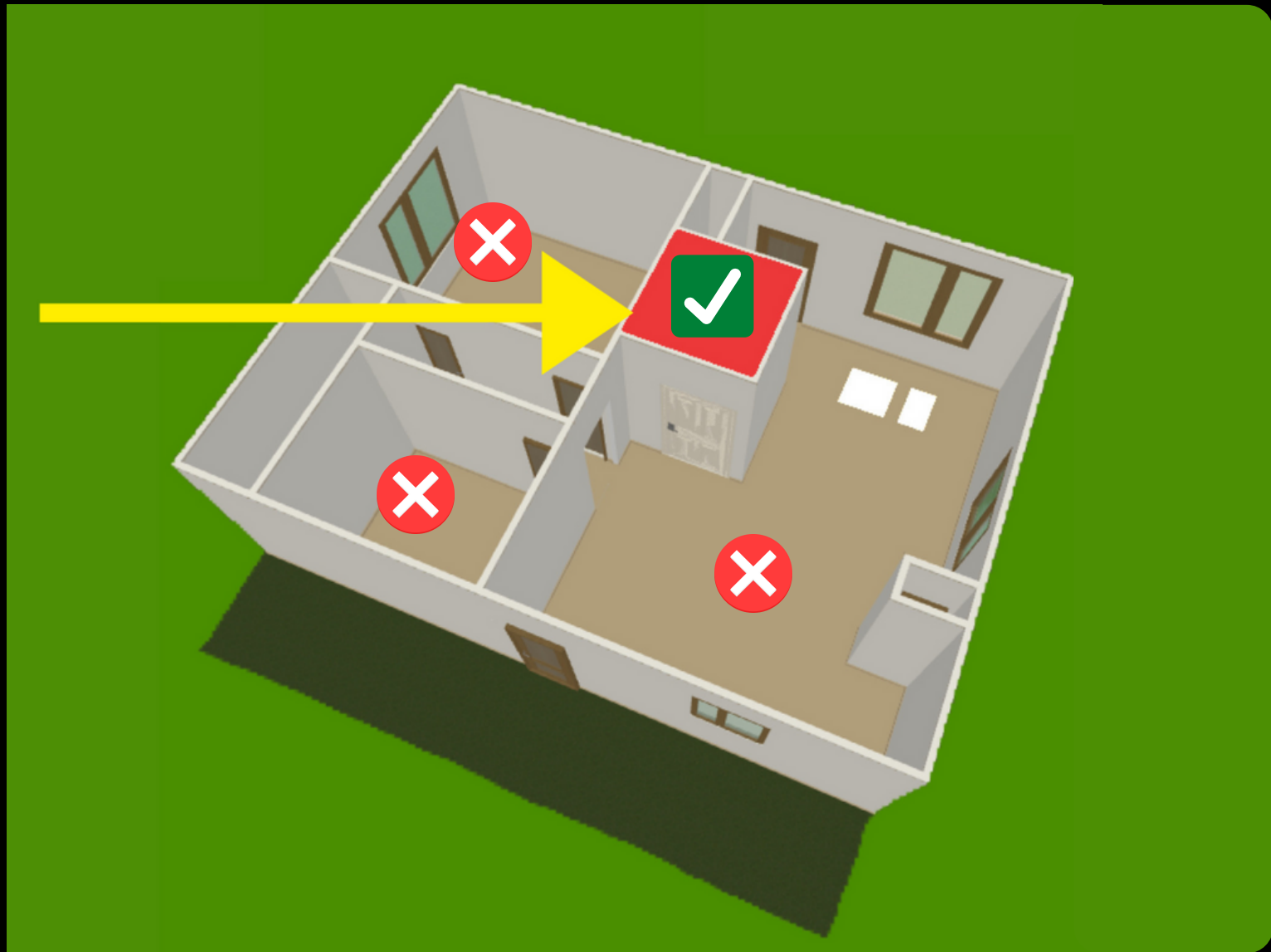
**RUFF! HELP ME DECORATE
AND COLOR MY DOG
HOUSE STORM STUDIO!**



-CHASE

WEATHER225.COM

DO YOU KNOW?



**IN THE EVENT OF A
TORNADO, ALWAYS SEEK
SHELTER IN A STURDY
BUILDING IN THE
CENTERMOST CLOSET OR
BATHROOM, OR STORM
SHELTER AWAY FROM
DOORS AND WINDOWS**

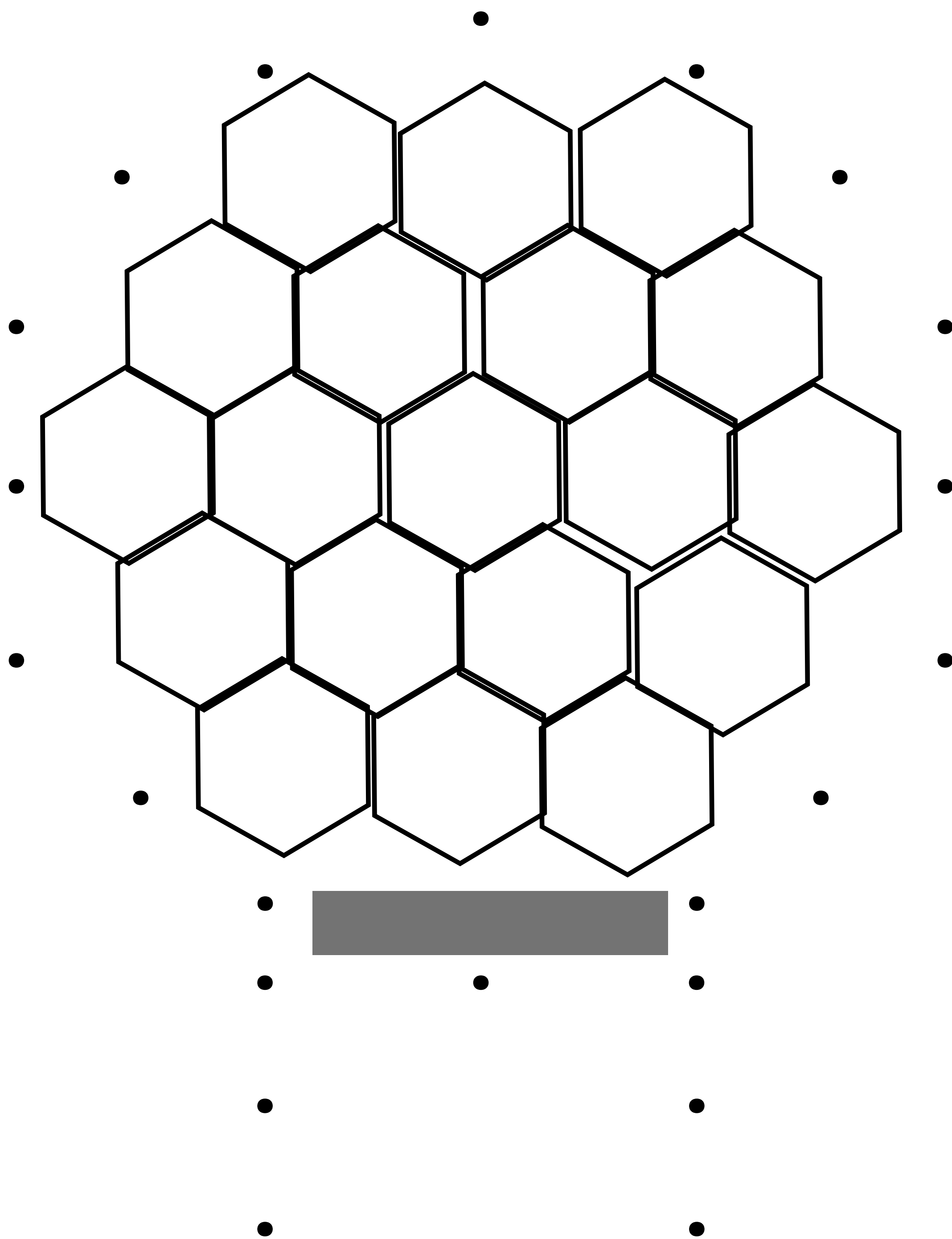
**WHEN SEEKING SHELTER
ALWAYS FIND A PLACE TO
SHELTER IN THE
CENTERMOST CLOSET OR
BATHROOM ON THE
LOWEST FLOOR OR IN A
BASEMENT OR STORM
SHELTER**



WEATHER FACTS

- ***SEVERE WEATHER*** CAN OCCUR ALL YEAR, BUT IS MOST ACTIVE IN THE MONTHS OF SPRING
- ***HURRICANE*** SEASON STARTS JUNE 1ST AND ENDS NOVEMBER 30TH
- ***EL NIÑO*** IS A WEATHER PHENOMENON WHERE WATERS WARM UP, OFF THE COAST OF WESTERN CENTRAL AMERICA INTO THE PACIFIC OCEAN
- ***LA NIÑA*** IS A WEATHER PHENOMENON WHERE WATERS COOL DOWN, OFF THE COAST OF WESTERN CENTRAL AMERICA INTO THE PACIFIC OCEAN

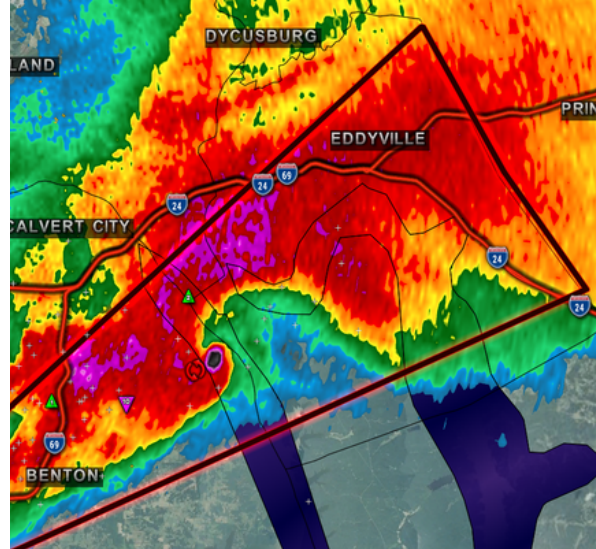
CONNECT THE DOTS



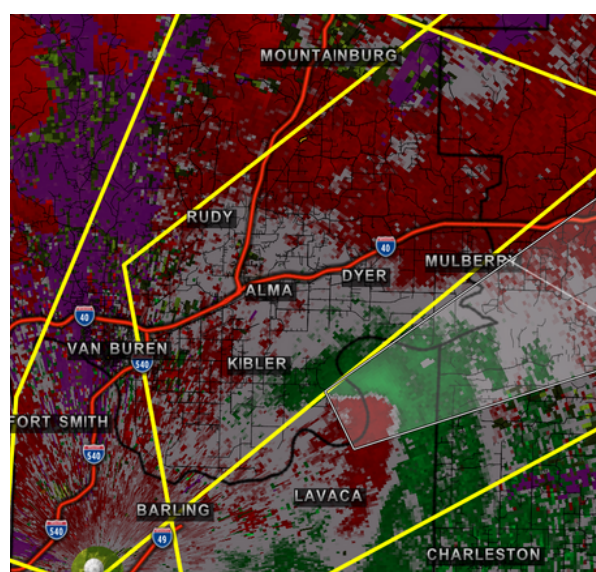
YOU CONNECTED THE DOTS TO DISCOVER A DOPPLER RADAR!



**DOPPLER RADAR IS
WHAT METEOROLOGISTS
USE TO DETECT
RAINFALL, HAIL, SNOW,
WIND, AND EVEN DEBRIS
WITH TORNADOES**



**REFLECTIVITY IS WHAT IS
USED TO SHOW
PRECIPITATION
OCCURING**



**VELOCITY IS USED TO
SHOW WIND SPEED AND
DIRECTION, AS THE
RADAR CAN SHOW
WHICH DIRECTION RAIN
AND DEBRIS IS MOVING
INSIDE THE STORM.**

DID YOU KNOW?

***IN ORDER FOR A STORM TO BE CONSIDERED
"SEVERE" AND HAVE A WARNING ISSUED, YOU NEED
THE FOLLOWING:***

***A STORM THAT IS CAPABLE OF OR ACTIVELY
PRODUCING HAIL UP TO 1 INCH IN DIAMETER***

***A STORM THAT IS CAPABLE OF OR ACTIVELY
PRODUCING WINDS OF 58 MPH OR GREATER***

